



PT DOHA MAKMUR PERKASA

COMPANY PROFILE



HDPE PIPE & ACCESSORIES

HDPE CORRUGATED PIPE

SOLAR PV MODULE

PIPE WELDING MACHINE

PIPING SYSTEM INSTALATION

RENEWABLE ENERGY PROJECT

ABOUT OUR COMPANY

A BRIEF STORY ABOUT THE COMPANY

With more than 20 years of experience, our founders have dedicated themselves to the piping industry. Both for the private company and government sectors. We are determined to continue the spirit and hold a new baton to face the new era of the digital world, by continuing to follow the latest technology and innovation. We also want to build reliable, agile and integrated manpower to be able to become problem solvers for customers.

VISION

To be an intermediary between producers and customers to introduce innovations and provide the latest products that can be adapted to solve problems faced by customers.

MISSION

- 01** Providing the latest products and innovations that can meet various needs and various problems in customers
 - 02** Develop human resources to be able to continue to follow the latest of customer needs and the development manufacturer technology.
 - 03** Strive to be a one stop solution for all customer needs with the best product and price offerings
-

OUR MARKET



INDUSTRIAL COMPANY

We are ready to support the manufacturing industry from the start of factory construction to post-production in managing industrial waste.



STATE-OWNED COMPANY

Our products support government programs in water and irrigation distribution in the regions.



OIL & MINING COMPANY

Industries with high levels of production complexity and problems. We are ready to provide the fastest, most accurate and precise support to support your company



CONSTRUCTION COMPANY

Our products play an important role in the construction industry, not only as structural elements for piping systems such as plumbing, drainage, and HVAC.



AGRICULTURAL COMPANY

Agriculture is the backbone of national food security, contributing significantly to Gross Domestic Product (GDP). Our products are ready to support the development of the agricultural industry.

HDPE PIPE

LESSO

INDOAC

HDPE PIPE (HIGH-DENSITY POLYETHYLENE). Made of PE-100 plastic material which has a high density level. Polyethylene is a Thermoplastic made from petroleum obtained from the ethylene polymerization process, formed when it reaches a certain melting point after going through the extrusion process. The PE-100 number indicates 10 MPa, which is the product's environmental stress value. This value starts from PE-32 to PE-125. Because the increase in this value indicates that the strength increases, it means that the wall thickness becomes thinner for the same pressure class. HDPE pipes are widely used to channel water and gas and are often used to replace concrete pipes, PVC pipes and iron pipes.

PRODUCT OVERVIEW

- Material : PE 100
- Pressure Rating : 0.8MPa, 1.0MPa, 1.25MPa, 1.6MPa, 2.0MPa
- Size : full 20mm through 1,400mm availability
- Standar : ISO 4427-2, EN 12201-2, GB/T 13663-2, BS6920, AS/NZS 4130, BS EN12201-2
- Colors :
 - Blue
 - Black with blue stripes
 - Other colors are also available upon request
- Form Supplied :
 - 5.8 meters straight length (all size)
 - 50 or 100 meters coil length (d_n20~d_n63)
 - other forms are also available upon request

APPLICATIONS

- Municipal water supply
- Commercial & Residential water supply
- Industrial liquids transportation
- Sewage treatment



Tests Item		Test Method	Unit	Standard value	Tests Item		Unit	Standard value
Physical properties	Density	ISO 1183	kg/m ³	942~953	Thermal and electrical properties	Linear expansion coefficient	10 ⁻⁵ /°C	11~13
	Water absorption	ISO 62	%	≤0.03		Specific heat capacity	kJ/kg · K	1.9~2.3
Mechanical properties	Tensile strength at yield	ISO 527-1	MPa	≥20		Heat conductivity	W/m · k	0.46~0.50
	Elongation at break		%	≥350		Melting point	°C	128~132
	Modulus of elongation		MPa	900~1100		Softening temperature (Vicat)	°C	125~127
	Poisson's ratio		-	0.46		Brittleness temperature	°C	≥-10
	Bending strength	ISO 178	MPa	24~25		Flammability	-	No performance
	Flexural modulus		MPa	1000~1200		Volume resistivity	MΩ · cm	≥10 ⁶
	Hardness (Durometer)	ISO 868	HDD	57~68		Dielectric breakdown strength	MV/m	17.3~23.6
	Impact strength (Charpy)	ISO 179	kJ/m ²	16~18		Permittivity	-	2.30~2.35

≡ 1 : Above are all representative values, not guaranteed values.
 ≡ 2 : ASTM D696

HDPE PIPE

SIZE LIST AVAILABILITY

DIMENSI		SDR 21 PN 8	SDR 17 PN 10	SDR 13,6 PN 12,5	SDR 11 PN 16	SDR 9 PN 20	Panjang Pipa		
DN (mm)	ND (inch)	Tebal (mm)	Tebal (mm)	Tebal (mm)	Tebal (mm)	Tebal (mm)	Straight	Coil	
20	1/2	-	1.2	1.5	2.0	2.3	50/100		
25	3/4	-	1.5	2.0	2.3	3.0			
32	1	-	2.0	2.4	3.0	3.6			
40	1 1/4	-	2.4	3.0	3.7	4.5			
50	1 1/2	-	3.0	3.7	4.6	5.6			
63	2	-	3.8	4.7	5.8	7.1			
75	2 1/2	-	4.5	5.6	6.8	8.4			
90	3	4.3	5.4	6.7	8.2	10.1			50
110	4	5.3	6.6	8.1	10.0	12.3			
160	6	7.7	9.5	11.8	14.6	17.9			5.8
200	8	9.8	11.9	14.7	18.2	22.4			
250	10	11.9	14.8	18.4	22.7	27.9			
315	12	15.0	18.7	23.2	28.6	35.2			
355	14	16.9	21.1	26.1	32.2	39.7			
400	16	19.1	23.7	29.4	36.3	44.7			
450	18	21.5	26.7	33.1	40.9	-			
500	20	23.9	29.7	36.8	45.4	-			
630	24	26.7	33.2	41.2	50.8	-			
830	24	30.0	37.4	46.3	57.2	-			
710	28	33.9	42.1	52.2	64.5	-			
800	30	38.1	47.4	58.8	72.6	-			
900	36	42.9	53.3	-	-	-			
1000	40	47.7	59.3	-	-	-			
1200	48	57.2	-	-	-	-			
1400	56	66.8	-	-	-	-			
1600	64	-	-	-	-	-			

SDR : Standard Dimension Ratio

DN : Diameter Nominal

PN : Pressure Nominal



FITTING & ACCESSORIES

MOLDED BUTT FUSION



Stub end



Reducer



Elbow 90°



Elbow 45°



Equal Tee

SEGMENTED BUTT FUSION



Elbow 90°



Elbow 45°



Tee Wye 45°



True Y



Cross Tee



Equal Tee

COMPRESSION FITTING



Straight Coupler



Tee



Elbow



Reducer



End cap



Male Thread



Flange adaptor

FLANGE & OTHER ACCESSORIES



Flange JIS 10K



Flange ANSI 150



Rubber Gasket



Bolt



Nut



Washerr

WELDING MACHINE

BUTT FUSION WELDING MACHINE

MANUAL BUTT FUSION

Used for butt fusion welding of PE pipes, the hand-pushed or wheel-rotated four circles clamps field welding machines with excellent alignment and higher stability are more reliable.

- available for pipe d_n 40~200mm

SEMI-AUTO BUTT FUSION

Used for PE pipes butt fusion welding, the machines are equipped with high-precision hydraulic system, which can reduce the labor intensity of operators, provide more operational flexibility.

- available for pipe d_n 63~1200mm



Technical Parameters

Model	SH201004	SH201004-010004	SH201004-010004-010004	SH201004-010004-010004-010004
Pipe Diameter	50-110 (1/2" - 4")	63-125 (2" - 5")	80-160 (3" - 6")	100-200 (4" - 8")
Heating Plate Max. Temp.	210°C	210°C	200°C	200°C
Temp. Deviation in Surface (70-210°C)	±10°C	±10°C	±10°C	±10°C
Working Voltage	220V AC 50Hz	220V AC 50Hz	220V AC 50Hz	220V AC 50Hz
Heating Plate Power	3.0kW	3.0kW	3.0kW	3.0kW
Heating Time/Power	0.7min	0.7min	0.7min	0.7min
Welding Power	1.5kW	1.5kW	1.5kW	1.5kW
Welding	Case	2 Physical Cases	2 Physical Cases	2 Physical Cases
Weight	0-000kg	0-000kg	0-000kg	0-000kg

Technical Parameters

Model	SH201004	SH201004-010004	SH201004-010004-010004	SH201004-010004-010004-010004
Pipe Diameter	50-110 (1/2" - 4")	63-125 (2" - 5")	80-160 (3" - 6")	100-200 (4" - 8")
Heating Plate Max. Temp.	210°C	210°C	200°C	200°C
Temp. Deviation in Surface (70-210°C)	±10°C	±10°C	±10°C	±10°C
Pressure Adjustment/Ranges	0-10MPa	0-10MPa	0-10MPa	0-10MPa
Working Voltage	220V AC 50Hz	220V AC 50Hz	220V AC 50Hz	220V AC 50Hz
Heating Plate Power	3.0kW	3.0kW	3.0kW	3.0kW
Heating Time/Power	0.7min	0.7min	0.7min	0.7min
Hydraulic Unit Power	1.5kW	1.5kW	1.5kW	1.5kW
Total Power	0.45kW	0.45kW	0.45kW	0.45kW

OTHERS TOOLS

Reciprocating Saw

Pipe Cutter



Pipe support roller



Model	SH201004	SH201004-010004	SH201004-010004-010004	SH201004-010004-010004-010004
Pipe Diameter	50-110 (1/2" - 4")	63-125 (2" - 5")	80-160 (3" - 6")	100-200 (4" - 8")
Heating Plate Max. Temp.	210°C	210°C	200°C	200°C
Temp. Deviation in Surface (70-210°C)	±10°C	±10°C	±10°C	±10°C
Pressure Adjustment/Ranges	0-10MPa	0-10MPa	0-10MPa	0-10MPa
Working Voltage	220V AC 50Hz	220V AC 50Hz	220V AC 50Hz	220V AC 50Hz
Heating Plate Power	3.0kW	3.0kW	3.0kW	3.0kW
Heating Time/Power	0.7min	0.7min	0.7min	0.7min
Hydraulic Unit Power	1.5kW	1.5kW	1.5kW	1.5kW
Case Power	0.210-0.200kW	0.210-0.200kW	0.210-0.200kW	0.210-0.200kW
Total Power	0.300kW	0.300kW	0.300kW	0.300kW
Weight	500kg	700kg	700kg	700kg
Welding	2 Physical Cases	2 Physical Cases	2 Physical Cases	2 Physical Cases
Welding	1-000kg	1-000kg	1-000kg	1-000kg



CORRUGATED HDPE PIPE

LESSO



HDPE Double Wall Corrugated pipe, completely made of high-density polyethylene (HDPE), the outer wall presents a corrugated structure, the inner wall is smooth and flat. The double wall design can not only enhance the pressure resistance of the pipeline, but also effectively reduce the weight of the pipeline.

HDPE Spiral Enhance PE A Pipe, First, polyethylene is used as raw material to extrude rectangular tube embryo, which is wound and welded into a special hollow "work" shape pipe with double flat wall structure. The inner and outer walls are smooth and flat, with high ring stiffness and light weight characteristics.

Metal Reinforce PE Spiral Corrugated Pipe, The pipe wall structure consists of a reinforcing layer made of high-strength steel tape formed in a spiral and a base layer made of high-density polyethylene, thus creating a pipe with the properties of plastic flexibility and metal rigidity.

INNER DIAMETER (mm)	DOUBLE-WALL		SPIRAL ENHANCE PE A			METAL REINFORCE SPIRAL		
	SN4 (≥24Kn/M ²)	SN8 (≥28Kn/M ²)	SN4 (≥24Kn/M ²)	SN8 (≥28Kn/M ²)	SN12.5 (≥12.5Kn/M ²)	SN8 (≥28Kn/M ²)	SN12.5 (≥12.5Kn/M ²)	SN16 (≥16Kn/M ²)
110	✓	✓	✓	✓	✓			
160	✓	✓	✓	✓	✓			
200	✓	✓	✓	✓	✓			
225	✓	✓	✓	✓	✓			
300	✓	✓	✓	✓	✓			
400	✓	✓	✓	✓	✓		✓	✓
500	✓	✓	✓	✓	✓	✓	✓	✓
600	✓	✓	✓	✓	✓	✓	✓	✓
700	✓	✓	✓	✓	✓	✓	✓	✓
800	✓	✓	✓	✓	✓	✓	✓	✓
900			✓	✓	✓	✓	✓	✓
1000			✓	✓	✓	✓	✓	✓
1100			✓	✓	✓	✓	✓	✓
1200			✓	✓	✓	✓	✓	✓
1300			✓	✓	✓	✓	✓	✓
1400			✓	✓	✓	✓	✓	✓
1500			✓	✓	✓	✓	✓	✓
1600			✓	✓	✓	✓	✓	✓
1700			✓	✓	✓	✓	✓	✓
1800			✓	✓	✓	✓	✓	✓
2000			✓	✓	✓	✓	✓	✓
2200			✓	✓	✓	✓	✓	✓
2400			✓	✓	✓	✓	✓	✓

PV SOLAR CELL

We understand that maintaining the sustainability of energy on this earth is our shared responsibility, with the hope that future generations will continue to have a clean, safe and sustainable living environment. Therefore **DOHA** wants to participate and be part of the introduction, promotion, development and innovation of renewable industries.

LESSO

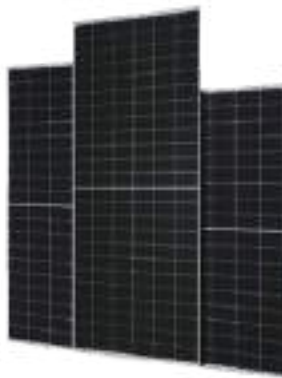


N-TYPE MODULE



Power Range
415W~585W

P-TYPE SERIES



Power Range
395W~670W

PURE BLACK P-TYPE



Power Range
390W~660W

Features and Benefits

- 100% Additional Power Generation**
It can increase by up to 10.3% additional power generation compared to conventional P-type modules.
- Better Weak Illumination Response**
Higher power output in low-light conditions like on cloudy or foggy days.
- ZERO LID (Light Induced Degradation)**
To help solve LID, we use GCR technology, which can increase power generation.
- Better Temperature Coefficient**
Higher power generation under working conditions, thanks to pioneering cell and technology.
- Lower LCOE**
Higher efficiency, higher power output and lower BOM cost.
- Wider applicability**
More application scenarios like BIPV, vertical installation, swimming, agriculture, sandy and dusty sites.

Features and Benefits

- The application of multilayer (MSR) full-cell technology brings stronger resistance to shade and lower risk of hot spot.
- Strict control on raw materials and process optimization of high efficiency PERC ensure better resistance against PID of PV modules.
- Through harsh weathering tests of sand, dust, salt mist, ammonia, etc., to get stronger weather resistance of outdoor environment.
- Lower oxygen and carbon content result in lower LID.
- By series and parallel design, to reduce the series RC and achieve higher power output and lower BOM cost.
- Lower temperature coefficient and lower operating temperature can ensure higher power generation.

Features and Benefits

- The application of multilayer (MSR) full-cell technology brings stronger resistance to shade and lower risk of hot spot.
- Strict control on raw materials and process optimization of high efficiency PERC ensure better resistance against PID of PV modules.
- Through harsh weathering tests of sand, dust, salt mist, ammonia, etc., to get stronger weather resistance of outdoor environment.
- Lower oxygen and carbon content result in lower LID.
- By series and parallel design, to reduce the series RC and achieve higher power output and lower BOM cost.
- Lower temperature coefficient and lower operating temperature can ensure higher power generation.

OUR SERVICES



Site Survey

- Inventory analysis
- Topographic analysis
- Irradiation analysis



Budgeting

- Equipment and material costs
- Installation costs



Investment Analysis

- ROI calculation
- Investment proposal



Rendering

- 3D Simulation
- BIM Animation



Detailed Design

- Architectural & Civil construction drawings
- Electrical AC & DC drawings



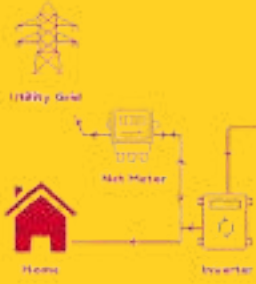
Adjustment Atlas

- Project site survey
- Compilation of as built drawings

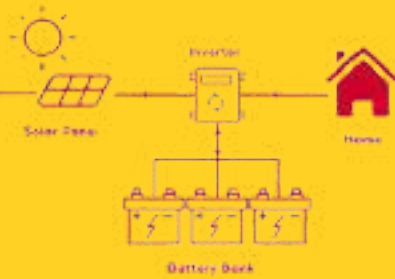
PV SOLAR CELL

OUR SYSTEM

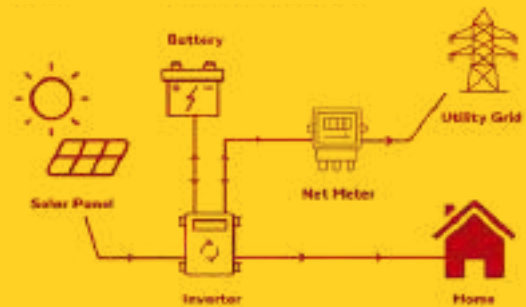
On-Grid System



Off-Grid System



Hybrid System



INSTALLATION METHOD

Ground-Mounted



Pole



Floating



Rooftop



GLOBAL PARTNERS



LOCAL PARTNERS



OUR PORTFOLIO

OUR CLIENTS



OUR PROJECTS



THANK YOU

Tangerang Warehouse



Semarang Warehouse



Ruko Golden Boulevard Blok R No.48
JL. Pahlawan Seribu Kel. Lengkong Karya
Kec. Serpong Utara Kota Tangerang 15331



021 - 5315 3153



www.pt-doha.com

WE ARE READY TO ASSIST YOU



BRINGING IDEAS & INNOVATION
TO LIFE THROUGH TECHNOLOGY